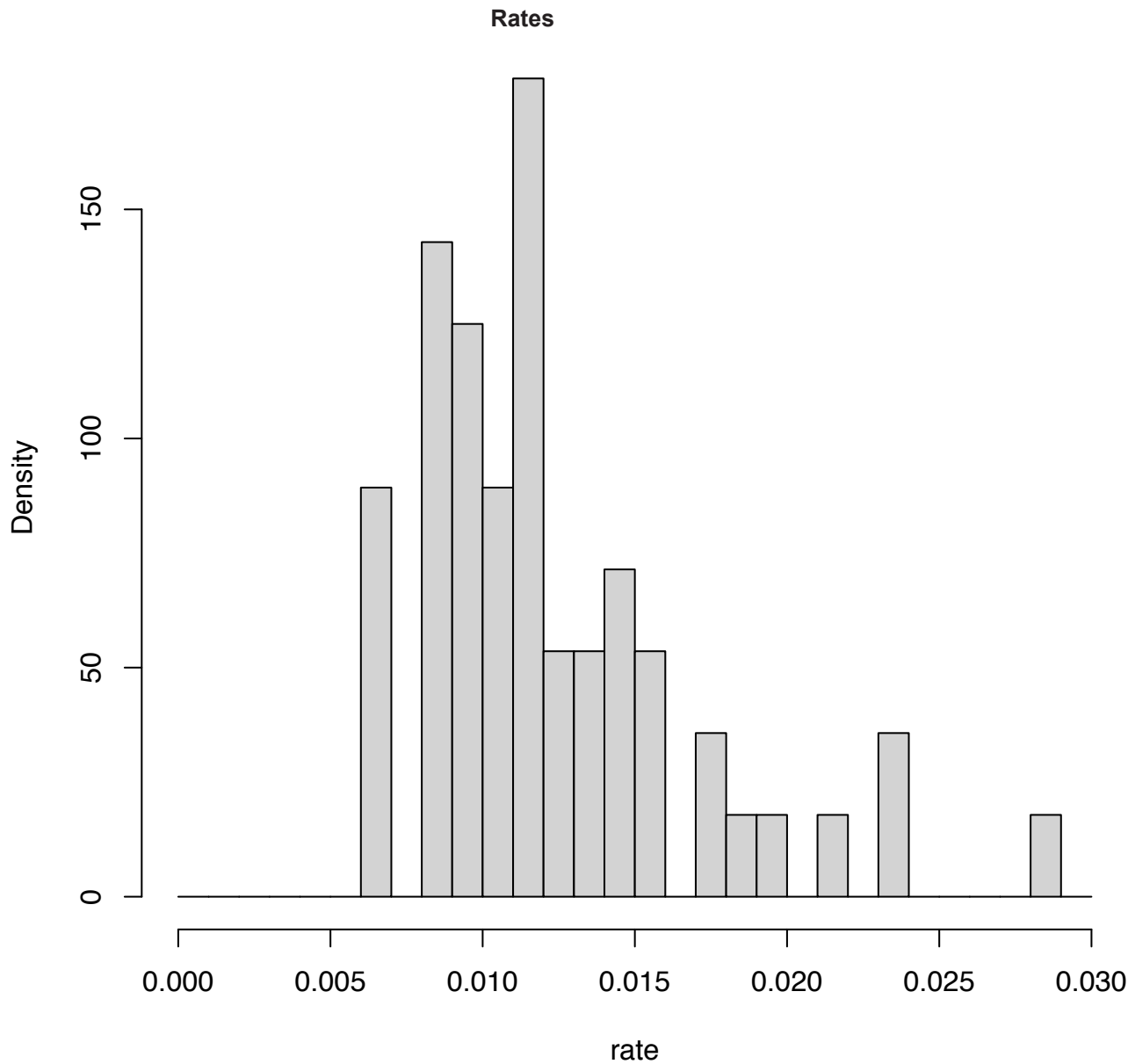
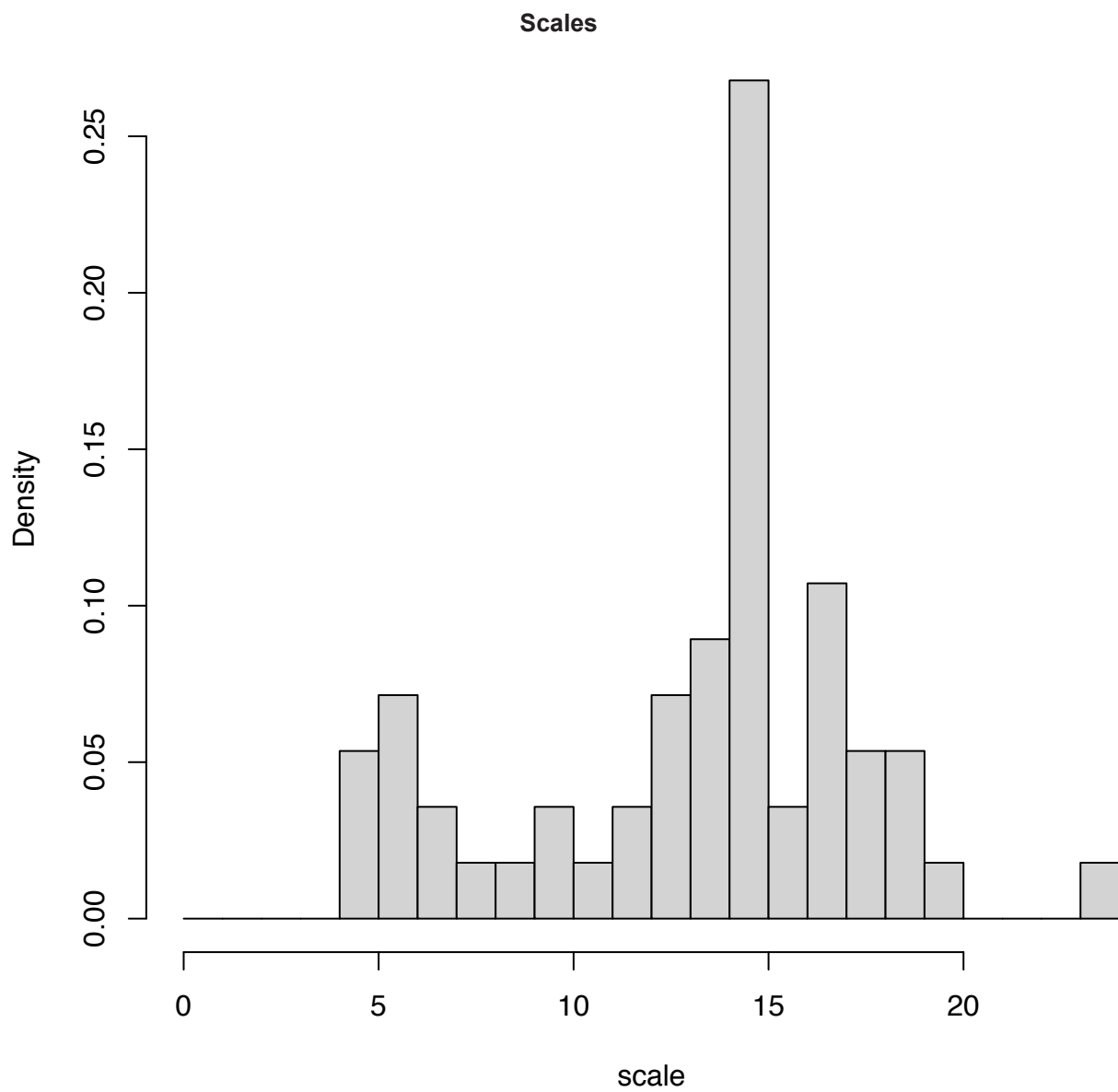


Herbarium DNA degradation: falling to pieces non-randomly
Freek T. Bakker and Lia Hemerik

ESM Appendix 2 (pp 1-3):

The same data as in ESM Appendix 1, now showing distributions of rate parameter values for the fitted exponential distributions, and shape and scale parameters for the fitted gamma distributions, across the 56 data sets used (see text).





Shapes

